

Scientific center Bemkon www.bemkon.ru

PEOPLE'S CHANGE UNDER THE GROWING COSMIC ENERGY : PROTESTS OR DEVELOPMENT DUSH

(scientific researches results)

There are an significant dependence of people's activity on electromagnetic fields. This dependence is opened by physicists.

Such fields are called gravitational-spin, torsional fields, ether vortex. There is no common view about the name of these fields and their substance among physicists. They are connected with ether density.

- ▶ The humanity reacts on cosmic ether density fundamentally (nowadays it is happening). The following subjects are changed: ElectroEncephaloGram, EEG, psychic activity, intellect type, personality type etc. Person personality is a sensitive sensor of ether vortex streams, and organism is tuned for energy consumption from ether. Countries which understand it first and start use scientific data from developed methods in society change, managers selection etc, such countries can receive strategic advantages in development.

- ▶ **Main idea:** People are differ by their possibilities come into resonance and pump the energy from cosmic fields. People with such capabilities (resonators, passionaries) have obvious advantages in comparison with others in the period of dense ether vortexes. Persons who don't have a needed energy for objectively understanding the surraunding world, for active work - those imitate their possibilities and abilities, using more often word's help, insubstantial world's map.
- ▶ The ratio of passionaries and subpassionaries is changing by cosmic cycle.

- ▶ The difference of understanding passionaries, resonators problem nowadays and in the past:
- ▶ 1. There are methods for measuring of cosmic fields (electromagnetic and non-electromagnetic) and diagnostic with the help of modern methods including ElectroEncephaloGram, person typology; the activity and behavior of such persons are different during cosmic fields intensification.
- ▶ 2. There are intensification of density ether today. It connects with the fact that the Sun system comes through Galactic equator with maximal ether density. It has impact on earthquake, eruption of volcanos, извержениях вулканов, Earth magnetic pole moving, temperature anomalies and other reasons. **But the main point - people are changing radically.**

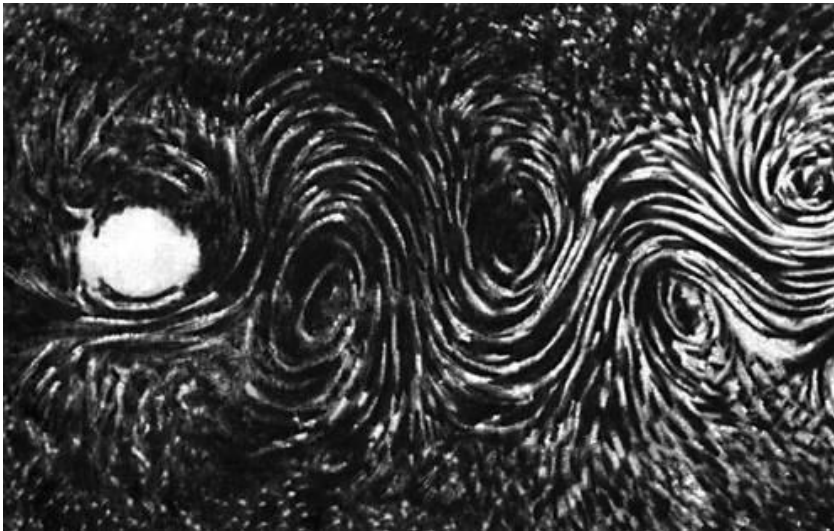
- ▶ In the past similar cosmic period the following happened: jump in development of countries, nations or revolutions, protests, imperia and social structure destruction. In there were passionaries, resonators in elite - the jump in development happened. If such psyhotypes were in contr-elite - revolutions and imperia's destructions happened.
- ▶ See.: *the Histoire breathing*. - M.: 2015. - 831 c
- ▶ ***SUCH PROCESSES ARE CONNECTED WITH ETHER VORTEX ENERGY***

Scientific center Bemkon www.bemkon.ru

We don't see the ether. That's the reason why even some scientists are sceptic about its existing.

The ether expression can visualized (the metal crumbs are structured as impact of magnetic line etc.).

It is possible to understand the rules of ether energy expression, vortex of ether through the vortex observation in gas and water.



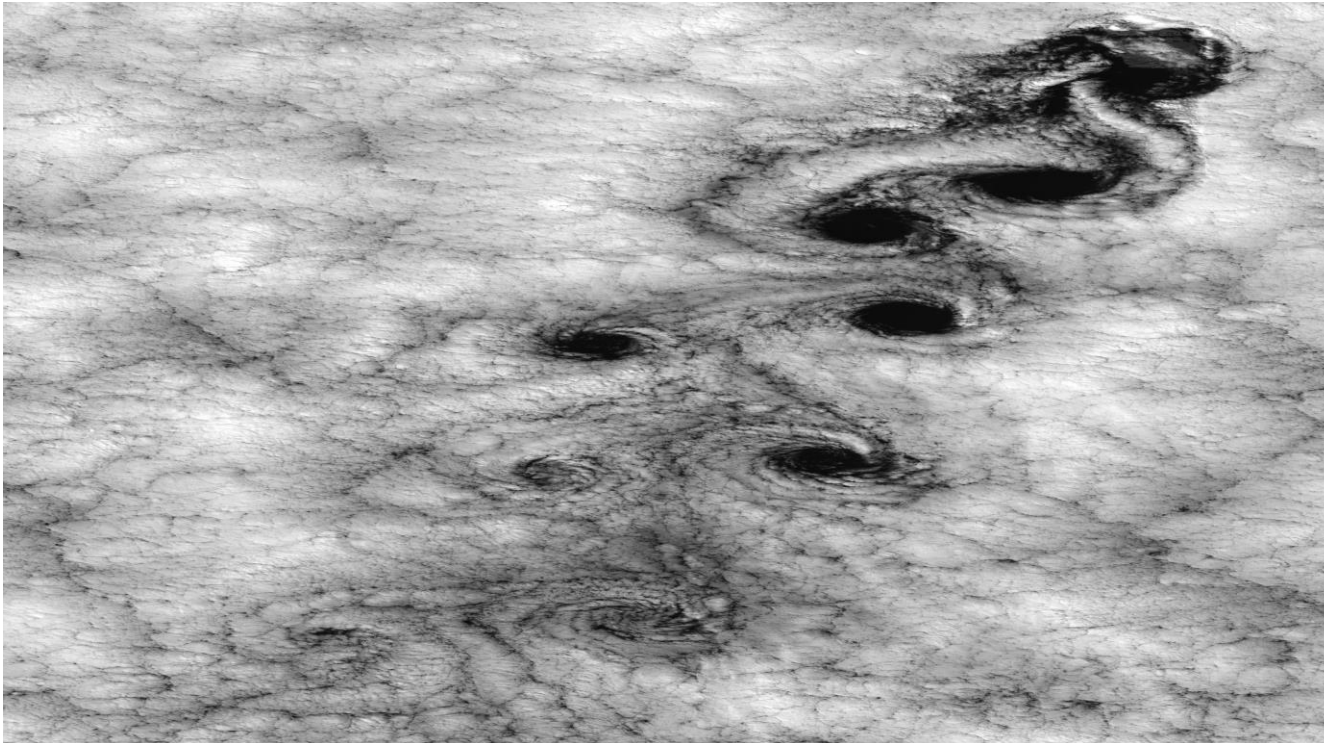
<http://dic.academic.ru/dic.nsf/bse/74872> It happens often in the atmosphere.

Scientific center Bemkon www.bemkon.ru

There is a satellite photo of vortex way, which is appeared thanks to air flow around Robinson Cruze Island.

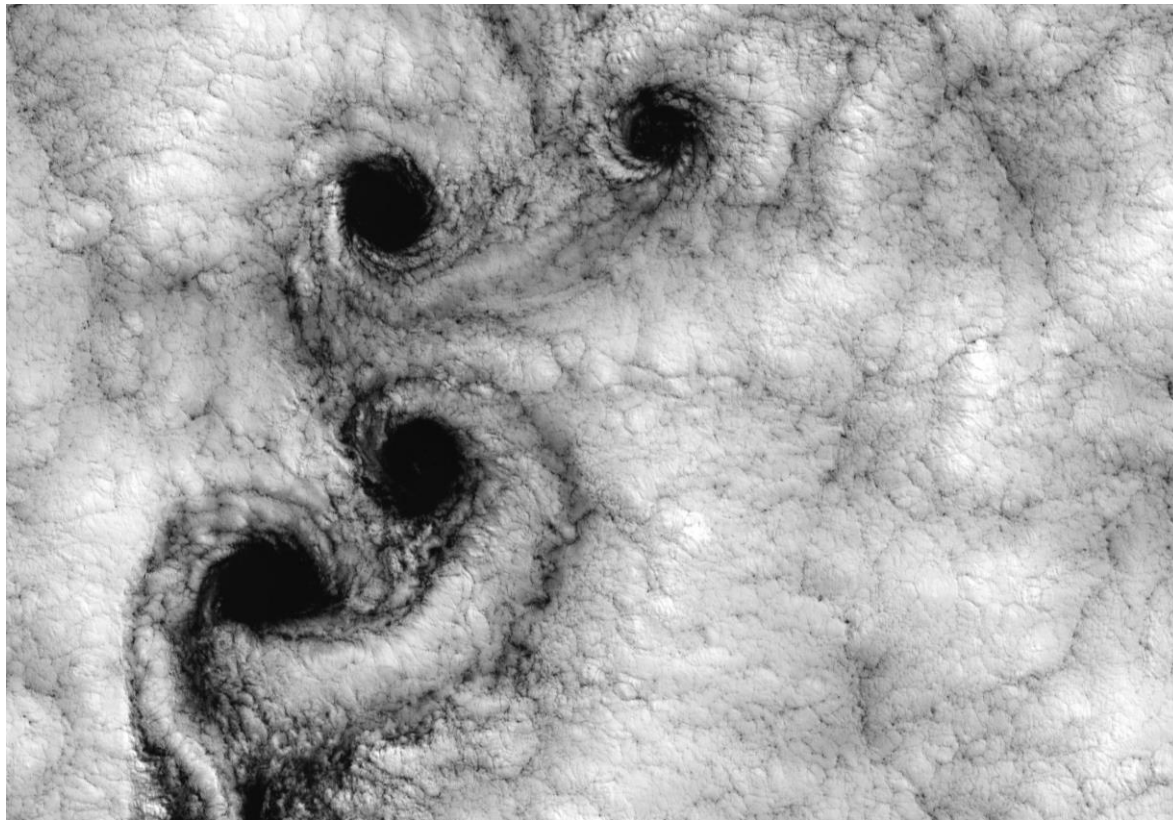
<https://upload.wikimedia.org/wikipedia/commons/2/2c/Vortex-street-1.jpg>

This is the vortex way of Karman. It can be seen when water or gas flow around long cylindrical objects (or other long hard streamlined objects) with long axis, perpendicular to the direction of the continuum movement.



Scientific center Bemkon www.bemkon.ru

The effect of vortex breakaway. By turns: left-handed is replaced by right-handed. The size of vortices depend on the size of streamlined object. There is an linear dependence between the way width and distance between neighbor vortices.



Scientific center Bemkon www.bemkon.ru

The size of similar vortexes from the Earth.

<http://infosmi.net/events/19702-pyat-chelovek-stali-zhertvami-ocherednogo-tornado-v-amerike>



Scientific center Bemkon www.bemkon.ru

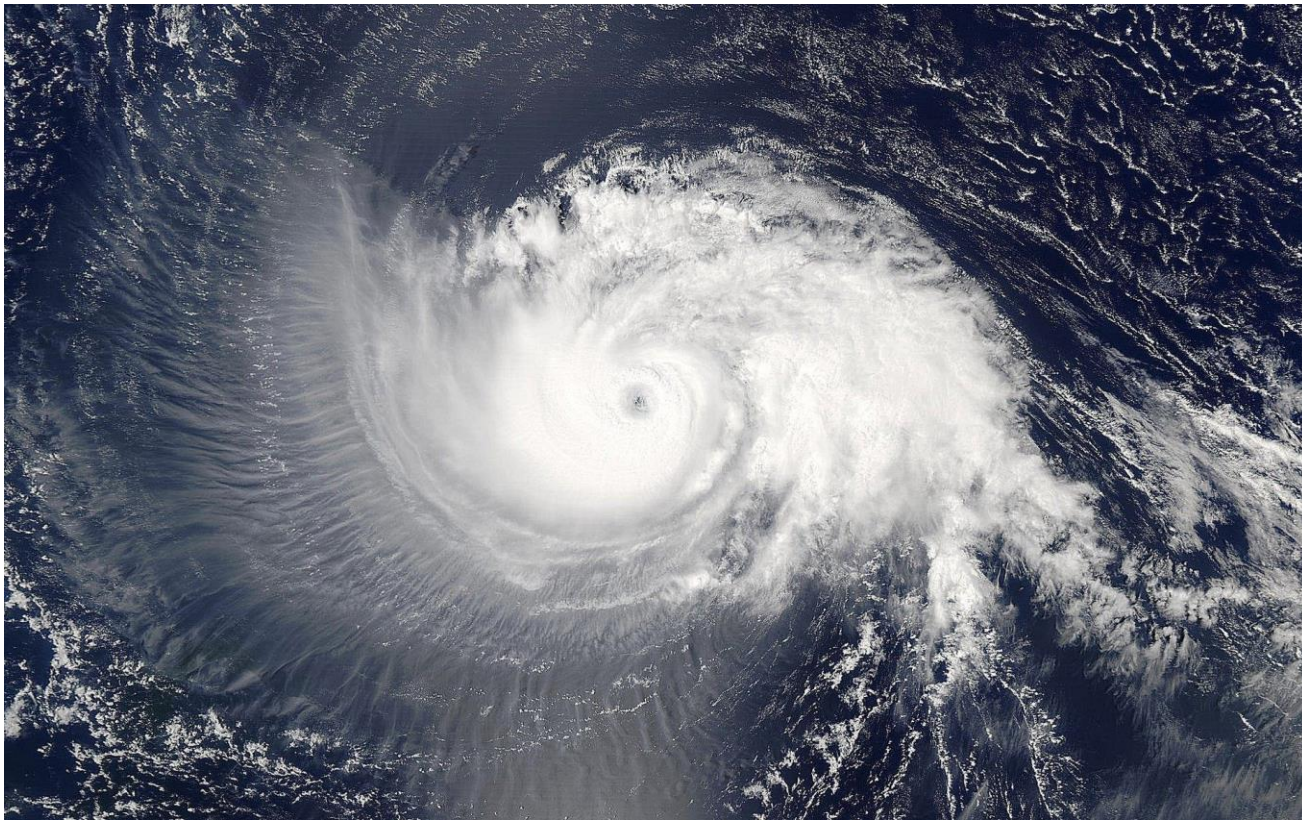
The more powerful vortexes, the more often they are lined up in one line.

https://yandex.ru/images/search?img_url



Scientific center Bemkon www.bemkon.ru

There are the calculations which show that the balance energy of tornado, powerful air vortexes connect with cosmic vortex flows (Nikolsky G.A. etc.).



- ▶ The ways similar to Karmane ether ways are created in the Space from the revolving. The Earth gets into these ways, concentrations of ether flows. The time, when the Earth getting into the gyration Energy, was measured by Pugach A.F. in the first half of 2012. Each time this period was match with the fact that not less than 3 planed in the Sun system were lined up across one line.
- ▶ Nikolsky G.A (Scientific Physics Research Institute Sain-Petersburg) has found out that such ether vortexes (his terminology: “solitones”) which are coming from the Sun, can be gathered by the Moon into the “bunch”, The Moon like passed it through the lens and they drive on the Earth. These are highly level researches.
- ▶ To avoid high physicists’ discussions about the core of described events - we’ve taken the obvious fact: the measured events. For example, there is a table created by Pugach A.F. Which contains the list of events happened during the period when there were the spinning effects of balls on the cords on the Earth. We have compared the period of the most intensive of these rounds rotations, the events happened on the Earth and the placement of the planets in the Space. We have also checked how the researches people made psychological tests during that period and how their ElectroEncephaloGram was changed. The cardinal people’s change.

Scientific center Bemkon www.bemkon.ru

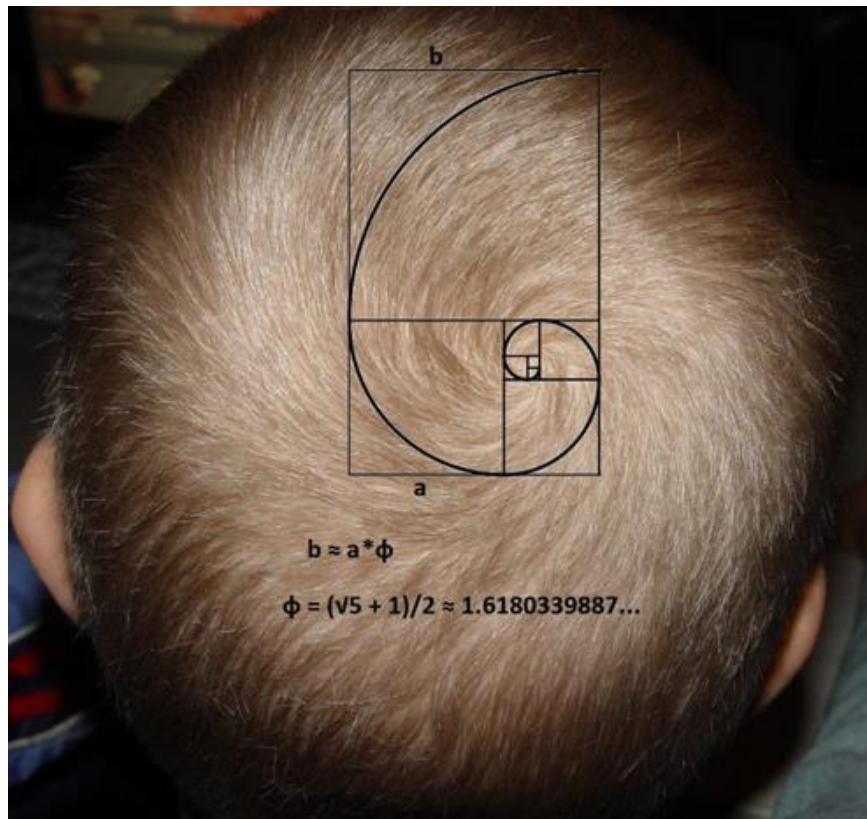
The conclusion: The person is sensible sensor of vortex ether flows, and our organism is built for receiving the energy from the ether. The countries which understand it first and start use the received data, developed methods in the change of society structure, heads selection, such countries will receive the strategic advantages in development.

- ▶ It is a fact that the human brain work, human heart work, deoxyribonucleic acid (DNA) action, nerve cells conductivity etc. are explained by vortex energy.
- ▶ And the human being from the head to the heel is inside the vortices.

Scientific center Bemkon www.bemkon.ru

Let's look... All of us are in the geometrically right vortexes: the golden section low is strictly kept.

<http://www.castaneda-ru.com/forum/threads/zhiznennaja-ehnergija-eh-to-seksualnaja-ehnergija.790/>



Scientific center Bemkon www.bemkon.ru

People, seashells, all alive beings have vortex energy imprint ... IT wouldn't be a live without an energy (see.: Kholmansky A.S. etc.)



Scientific center Bemkon www.bemkon.ru

How these seashells forms similar to the Galaxy's forms!

<http://udivitelno.com/creation/item/178-fotografirovanie-morskih-rakovin>



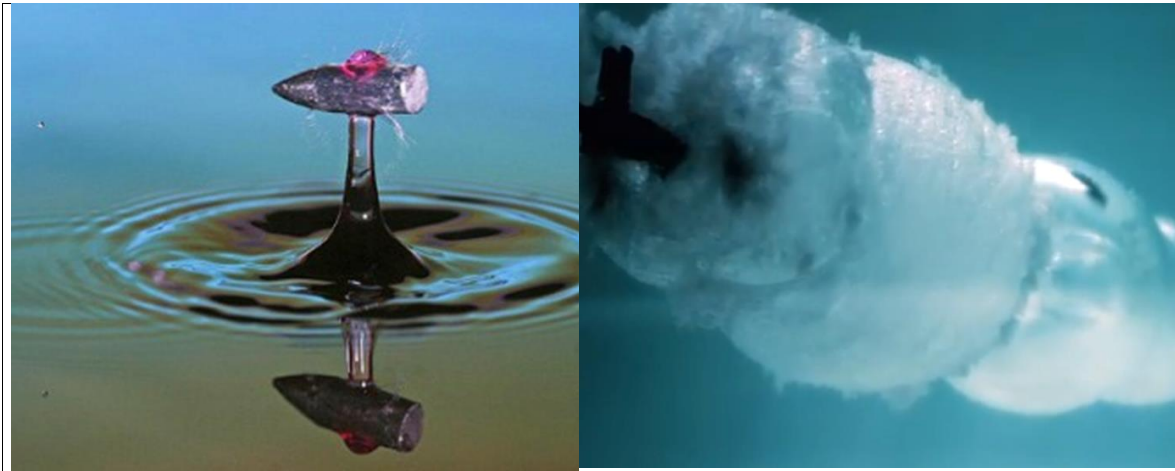
Scientific center Bemkon www.bemkon.ru

The objects moving rectilinearly create the vortexes. The bullet includes. The higher speed, the more relief vortexes. The microparticle speed is higher than bullet one. The vortex inside the micro-world is a typical event.

http://www.bugaga.ru/uploads/posts/2011-02/1296775421_ammunition-19.jpg

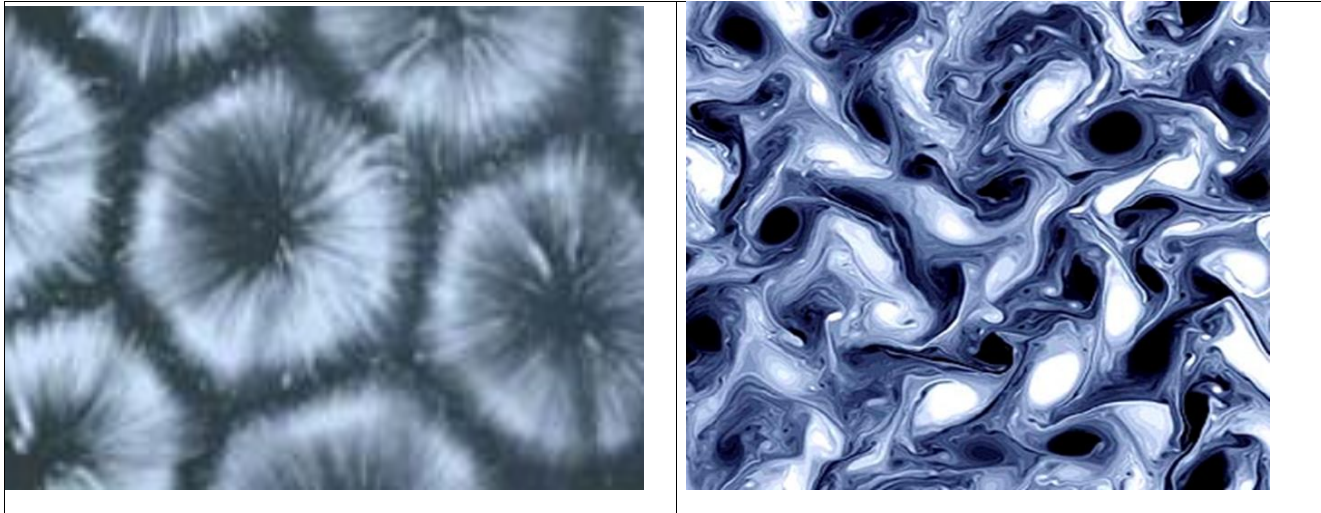
<http://www.computerra.ru/wp-content/uploads/2013/07/Screen-Shot-2013-07-23-at-12.29.25.png>

There are a bullet flight under water and inside it. It looks like some seashells form and the super-new star!



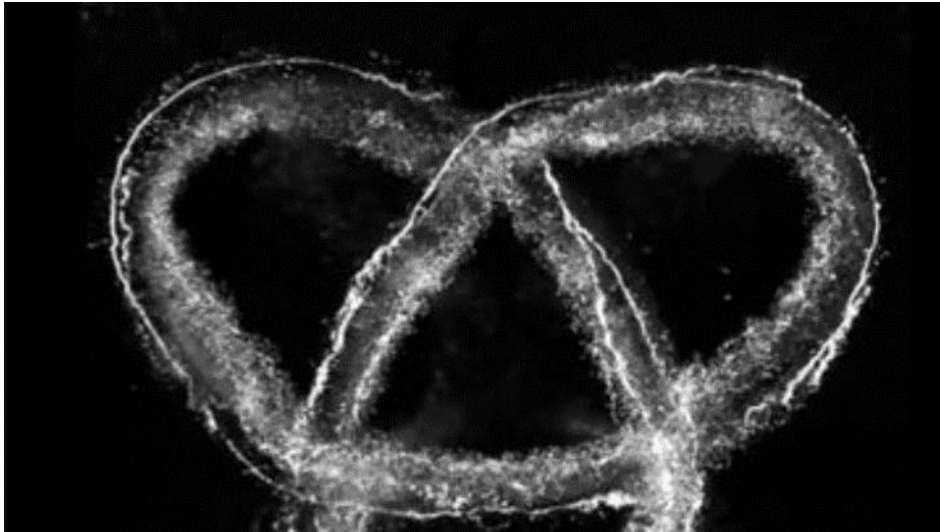
Scientific center Bemkon www.bemkon.ru

Let's heat constantly the thin level of silicon oil mixed with flakes of aluminium. It is spilled of the surface, torus become universal and make hexahedron form. These are Benard cells. These vortex are created thanks to thermal convection There is right photo of vortexes inside liquid helium. <http://www.vokrugsveta.ru/news/1142/>



Scientific center Bemkon www.bemkon.ru

The physicists from Chicago University laboratory could visualize the “tripetalous” node from the water vortex. They could monitor its evolution and decomposition. This work is published in the magazine [Nature Physics](#). These results are shown in the ScienceNow and the NatureNews. These are the smallest water parts. The ether contains of smallest water parts as well but even less. But the moving rules for gas, liquid, big and small medium are analogical.



Scientific center Bemkon www.bemkon.ru

A lot of Galaxies have vortex forms. The micro-world is penetrated with vortexes. There are quite a lot vortexes in the atmosphere.

http://puteshestvujte-s-nami.blogspot.ru/2015/04/blog-post_44.html

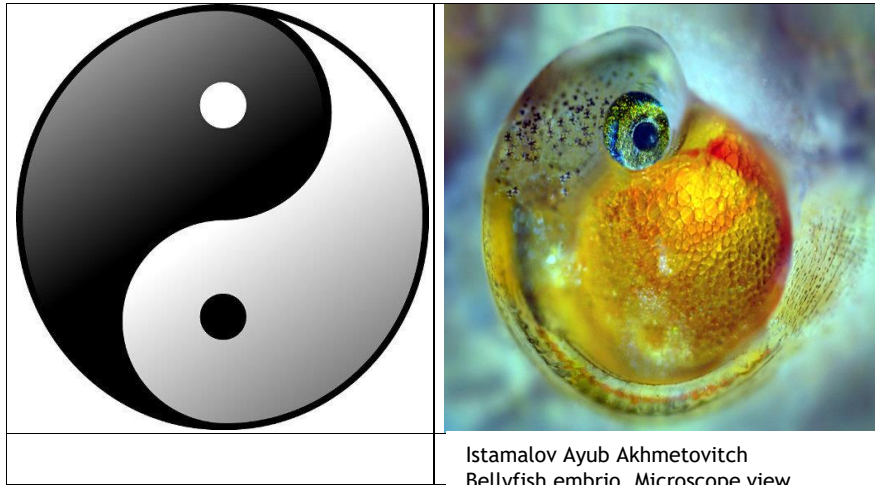


webdiscover.ru

<http://smotret-mir.ru/prirodnye-yavleniya/gubitelnye-vixri.html>

Scientific center Bemkon www.bemkon.ru

Right and Left spiral moving (liquid, gas) is a life symbol. Embryos of mammal, fish have the form close to the vortex.



Istamalov Ayub Akhmetovitch
Bellyfish embryo. Microscope view

http://2013.artsciencefest.ru/catalog.aspx?CatalogId=240&d_no=12377&r_no=10684&year=2014

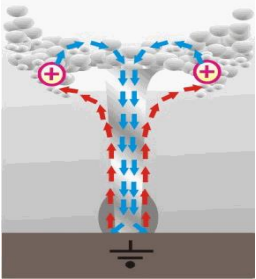





Scientific center Bemkon www.bemkon.ru

The vortex energy has identified during human heart working.

- ▶ The vortexes is a typical action during heart activity. They are identified inside the left aortic ventricle during heart relaxation (diastole). It was identified during Colour Doppler Sonography(Ultrasonography) and magnetic-resonance tomography [Bellhouse B.J. , 1972].
- ▶ The current researches confirm the existence of vortex ring in heart activity [See.: Kheradvar A., Milan M., Garib M., 2007]. It is wonder that this idea and even the image of toroidal vortex has appeared in Eastern Yoga practice.. <http://www.master-of-happy.org/forum/110-896-1>
- ▶ These effects can be explained by the etherdynamics. It menas it can be explained if it is recognized that space events has an impact on the structures, process in our visible world. It happens with different speed - from part of seconds in the micro-world till long time period, when ether vortexes under deoxyribonucleic acid, DNA influence create hard cover for mollusks, bones system for animals etc.

Scientific center Bemkon www.bemkon.ru

Many scientists assume that vortexes has positive impact on the plants grow. This mechanics is simple. The vortexes (tornados etc.) , which are researched on the Earth, have low pressure in the vortex' center. The air flows inside center are carried by ether flows and come down. The moving up exists on the back sides. See: <http://evgars.com/true.htm>
 Different vortexes, different trees, different mashrooms...

| | | |
|---|--|---|
|  |  |  |
| <p>http://evgars.com/true.htm</p> | <p>trasyy.livejournal.com</p> | <p>hq-obo.ru</p> |
|  |  |  |
| <p>prived.net530 × 428 This is the photo of Earth blizzard from Space.</p> | <p>This is the vortex on Venus' pole. http://starmission.ru/venus/232.html</p> | <p>This is a milk mushroom... gribnickspb.ucoz.ru</p> |

The vortex have plant form because deoxyribonucleic acid, DNA direct them so.

Scientific center Bemkon www.bemkon.ru

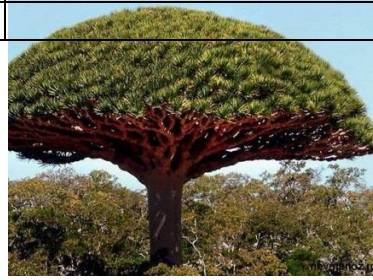
Different chrystales, different DNA, different vortexes, different plants



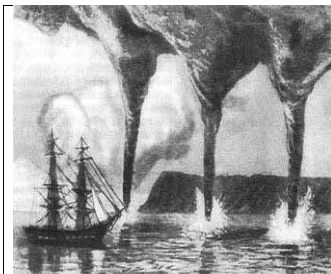
nashaplaneta.su



www.grc-eka.ru



www.liveinternet.ru



Scientific center Bemkon www.bemkon.ru

All these is described mathematically. There is AN ELECTROMAGNETIC ENERGY and there AN GRAVYTANIONAL-SPINAL ENERGY (gravitational-torsional, gravitational-vortex, gravitational-ether etc. There is no common name for it). The sun electromagnetic energy is responsible for photosynthesis, warm. And not electromagnetic, gravitational-spinal? It is responsible for the others.

First, let see the most important rule of nowadays physics. It is not universally recognized yet. But our researches, researches of psychologists, sociologists, chemists are coincided with these conclusions.

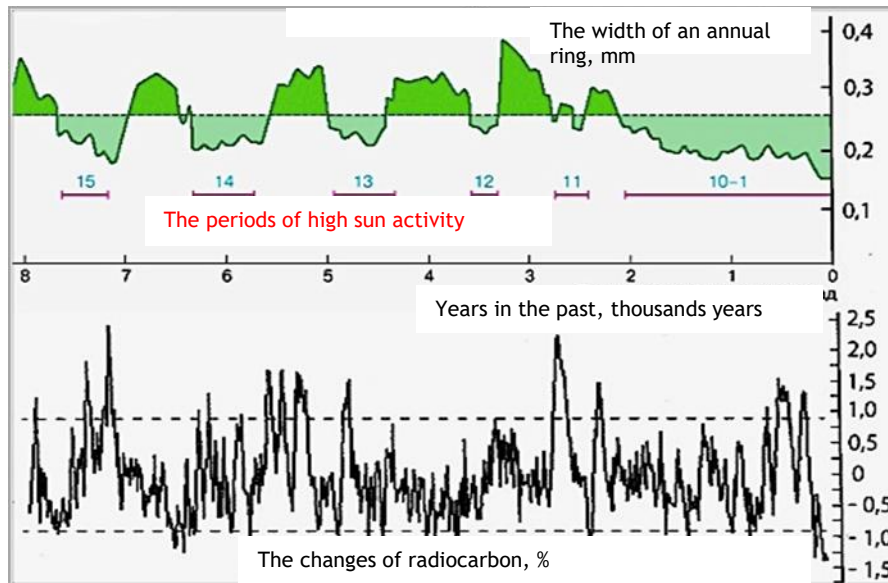
- ▶ A powerful of electromagnetic fields and a powerful of gravitational-spinal fields (according to Dyatlov V.L.) are reverse depended. He (Dyatlov) has set up the law of continuity of electric, magnetic, gravitational and spinal electricity. If it is so, than mushrooms, plants should grow better when water flows are more powerful: theses flows delivery soluble salts, substances from the earth to the trees leaves.
- ▶ There is possible that a slow, not visible «tornado» exists with tree, mushroom, in case their DNA transform ether flows coming from the Earth to such vortexes. Though the ether flows from Space can give such energy as well.

Scientific center Bemkon www.bemkon.ru

So, it means plants will grow not only thanks to sun activity? More over, if this low is right, plants will grow during periods when sun activity is less.

Yes. It is. There are a lot of historical data, which we have ignored before. There is a world-famous chart of dependence of tree grow speed from the ratio of gravitational-spinal (ether vortexes) and electromagnetic fields (sun activity).

See.: Kocharov G.A. The natural Sun activity archives and thermonuclear Sun histoire during last million years

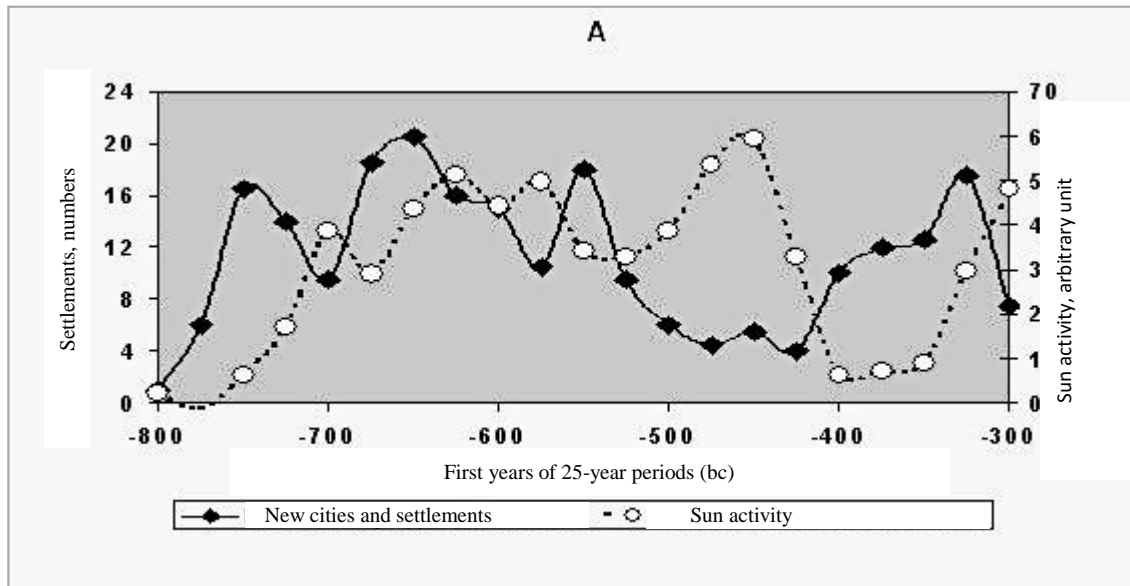


- ▶ The period of ether well-being in histoire - this is period when the development on the Earth become quicker thanks to huge amount of ether receiving. These period were often with low sun activity. The periods of low sun activity are known. It is known also that usually during this periods the gravitational-spinal energy activity is increasing usually. As ether is brought from Space to the Sun System, this dependence is not so obvious. Anyway, the connection between impetios plant growing, humanity with decrease of sun activity has been discovered.

If it is, this energy should has an impact on human development, human histoire, human itself.

Scientific center Bemkon www.bemkon.ru

The person is more active when he receives more gravitational spinal energy. Does it mean under less sun activity? There is a chart:



Picture. The sun activity and new city appearance in ancient Greece. The imperia creation corresponds to the ratio of electromagnetic and non electromagnetic vortex energy. (see. Petukhov S.A. Ancient Greece period histoire... Histoire and Mathematics: 2008, c. 163-182).

Scientific center Bemkon www.bemkon.ru

Ether densities are important for our development. Such densities take place cyclically. And the ratio of ether and sun activity is more important than vortexes itself.

- ▶ 1. About people essence change during Space ether flow density change.
- ▶ 2. About selection system of people in accordance of their possibility to “feed” this energy. These are passionators, resonators (they are in resonance with space energy).
- ▶ 3. About change in dependence of social-economical, historical processes in connection with people essence change under cyclical change of Space energy.
- ▶ 4. About change of state bases building during people essence changing.
- ▶ 5. About change of stock market rules as a result of space energy (electromagnetic and non electromagnetic as well!).
- ▶ 6. About psycho-economical rules in connection with Space cycles.
- ▶ 7. About essence of culture, spirituality. Actually, to “feed” space energy successfully can only the person who believe in this possibility.

- ▶ 1. About change in behavior, people's psychotype including social protests in connection with sun activity and ether density increase. The conditions for Space energy transfer from protest point to the creative point.
- ▶ *See.: Human in the ether vortex. - M.: 2016. - 437.*
- ▶ High sun activity and ether intensive flows (plus some additional conditions) create the protest situations, nervousness, revolutions, civil wars. This is situations of 1905, 1917, 1991 years. People "feed" such energy, this energy charge people. But different people are charged differently.
- ▶ Low sun activity and high ether vortex intension - this is jump in development for such countries where there are people in elite who have possibility to feel space fields and energize by them.
- ▶ The range of these space fields effect (electromagnetic and non electromagnetic) varies from revolution till development jump.

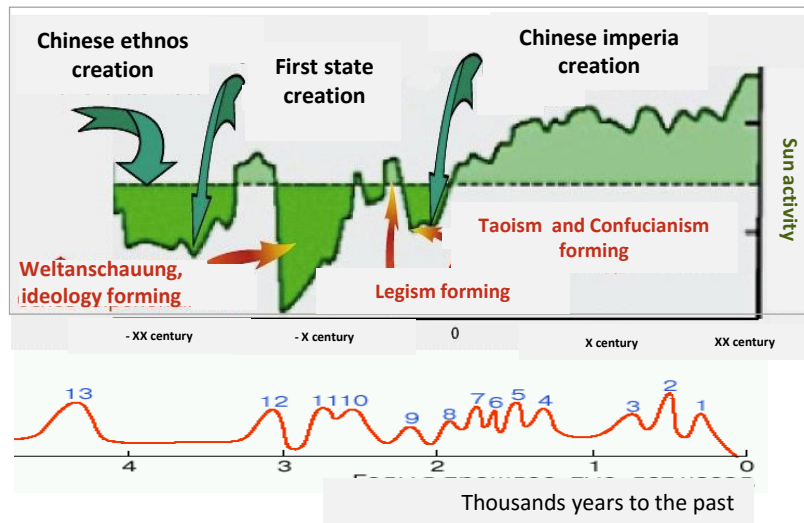
The ether density and sun activity is increasing now.

Scientific center Bemkon www.bemkon.ru

- ▶ - **2. About people selection, heads especially**, who can pump this energy from Space and transfer it to the active constructive activity. People who can't do it, imitate this activity thanks to words usually. That's why some persons speak wonderfully what to do and how to do, other persons working hard not having time for empty conversations. The companies, countries which are based on working people - they are supporting development change, countries which like well speaking heads - the crisis happen regularly.
- ▶ See: Top manager intellect: *to expert and researches*. - M.: 2015. - 677 c.

- 3. **Historical development rules** in connection with ether density changes, on the Earth moving way, Sun system. See *Histoire breath* – M. Pero, 2015 -831page

The Chinese ethnos development cycles and space energy rytm



- ▶ **4. About state creation rules** in different space conditions, with the head who can feel space influences and who can form the elite with ability to transform the society
- ▶ *See.: Soft strength in Germany histoire: 30the years of XX century lessons - M.: Publishier «Perso», 2014. - 313 page.*
- ▶ *Economical crisis: who is guilty and what to do. - M.: 2013. - 400 page.*

Scientific center Bemkon www.bemkon.ru

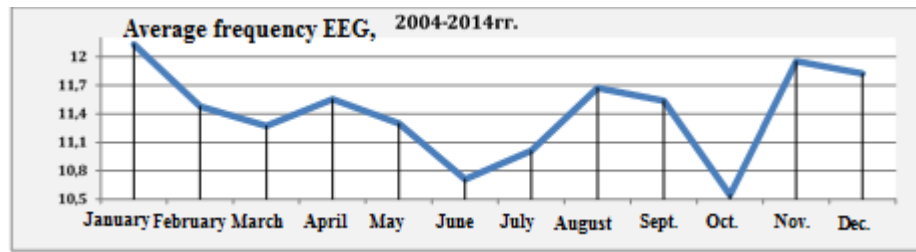
- ▶ **5. About change on stock markets** under influence of sun electromagnetic radiation and vortex ether energy.
- ▶ *See.: Psyhoeconomics: globalization, markets, crisis. - M.: 2012. - 300 page.*

Scientific center Bemkon www.bemkon.ru

- ▶
- ▶ **6. About psychoeconomical rules** in connection with space cycles and ration change of vortex energy and sun activity связи. The cycles which are coincided with Veda calendar (72, 144 years).
- ▶ *See.: Psyhoeconomics. - M.: 2012. - 540 page.*
- ▶ *Economical crisis: Space and people. - M.: 2014. - 229 page.*

Scientific center Bemkon www.bemkon.ru

7. About person essence as psycho-space phenomenon. About culture, spirituality of man. About the mechanics of ether flows transfer to the physical and psychical energy. About extrasensory people's ability who are connected with energy transfer, information transfer through ether flows. The top manager intellect: for the experts and researches. - M.: 2015. - 437 page.



- 1. About change of people's substance during change of ether flow density.
- 2. About a new system of people's estimation, selection.
- 3. About change of rules of socio-economic, historic processes during a new space time.
- 4. About necessity of change in a state construction basis during change of people's substance.
- 5. About change of rules in stock market moving under influence of space energy (electromagnetic and it's important - not electromagnetic!).
- 6. About the psycho-economical rules cyclic in connection with the space cycles.
- 7. About Humanity future.

See.: bemkon.ru

Scientific center Bemkon www.bemkon.ru

- ▶ Gumilev L.N. Compositions. - M.: Kharvest; Astrel, 2012. - 1519 c.
- ▶ Dmitriev A.N., Dyatlov V.L. The model of heterogeneous physical vacuum and natural self-shinning formations. Novosibirsk : 1995. (Preprint / EM SO RAS; No 16). 34 page. // Herald МИКА.} 1996. Issue. Z. S. 65-76.
- ▶ Dmitriev A.N., Dyatlov V.L. Geological-Geophysical sense of heterogeneous physical vacuum.(Geological institute OIGG@M, Mathematical institute SO RAS). Internet.
- ▶ Diatlov V. L. Polarization model of inhomogeneous physical vacuum. Novosibirsk, Publishing house of Institute of mathematics, 1998, 183 pag.
- ▶ Diatlov V.L. Electro-gravi-mechanical energy conversion. M.: 1995. (Preprint / MITPF AEN; No 12). 9 page.
- ▶ Kirpichnikov G.A. The anomalous world and man physics . T. 1 - 3

Scientific center Bemkon www.bemkon.ru

- ▶ Kosirev N.A. Selected works. Л.: ЛГУ, 1991. 445 s.
- ▶ Konuchov N.E. The economic crisis : Space and people. - М.: Pero 2014. - 229с.
- ▶ Konuchov N.E. The breath of history. - М.: Pero, 2015. - 831s.
- ▶ Konuchov N.E. Soft force of Germany history: lessons of 30-th year XX century. - М.: Published in house. «Pero», 2014. - 313s.
- ▶ Konuchov N.E. The economic crisis: who is to blame and what to do. - М.: 2013. - 400 s.
- ▶ Konuchov N.E., Arhipova O.N., Konuchova E.N. Intelligence chief: practitioners and researchers. - М.: 2015.
- ▶ Krilov S.M., Sobolev G.A. (1994). On the low-frequency vortical gravitational field on the earth's surface. // Reports Of Academy Of Sciences, Geophysics, T.339, №3, s.396-400.
- ▶ Krilov S.M. (2003). About some unusual effects in the natural fields of the Earth, recorded their exact methods of collection and analysis. // Modeling of geophysical processes, ISBN 5-201-14924-3, №3, s.124-129.)
- ▶ Larin V.N. Our Earth. - М.:, 2005

Scientific center Bemkon www.bemkon.ru

- ▶ Narmanskiy V . About the planetary nature of economic cycles August 30, 2011 <http://kapital-rus.ru/articles/article/190212/>
- ▶ Nikolskiy G.A . About the fifth interaction. http://vd2-777.narod.ru/article10/5th_interaction.htm
- ▶ Nikolskiy G.A., Pugach A.F. Exclusive solar sources of power-penetrating radiation and the transit of Venus. Proceedings of the eighth international conference of Natural and anthropogenic aerosols 2012, СПбГУ, 1-5 октября 2012 г. - СПб.: Изд-во ВВМ. - 2013. — 194-214; или в работе <http://vd2-777.narod.ru/article12/reason.htm>
- ▶ Nikolskiy G.A. "The most likely sources are whirlpool microwave radiation in the Sun. Effects of their impact on the Geosphere". Proceedings of the I Interregional Symposium "Ecology and Space" named after K. Y. Kondratyev, 8-9 February 2012, ИНЕНКО РАН, СПб, изд. СПбГУ, 2012, с. 374-387.
- ▶ Nikolskiy G.A. and Cherkasov A.A. (2007). The factors forming the El niño phenomenon associated with the motion of the Earth. // Сб-к presentations at international conference "Ecology and Space", 8-10 February 2007year., изд-во СПбГУ, page.237-241.
- ▶ Nikolskiy G.A.(2009). Effects and mechanisms of the effects of solar, spiral vortex radiation on the structure of matter. // Proceedings of VI Int. Conf. "Natural and anthropogenic aerosols - 2008», НИИ Physics СПбГУ, изд-во СПбГУ, с.187-194.
- ▶ Nikolskiy G.A . Vortex energy solar radiation and its interaction with matter. Department of atmospheric physics of the Physical faculty СПбГУ, Saint Petersburg, Russia. Materials of international scientific conference. Hosta, Sochi, 25-29 августа 2009 г., с. 54
- ▶ Nikolskiy G.A. About large-scale interactions are the main physical fields. Physical faculty of St. Petersburg University, 03.05.2013.

Scientific center Bemkon www.bemkon.ru

- ▶ Pugach A.F. Torching - The instrument for new physics, Part 1. Description of the design and features of the device., GFNN, The issue XX, value 3, 2014
- ▶ Saveliev A.V. Such inventions // Neurocomputers: development, application. - M.: IPRGR, 2004, № 2-3. - pages 33-49.
- ▶ Saveliev A.V. Overview of inventions in the field of Neurocybernetics and neural network modeling // Electronics. Informatics. Management. - ЗНТУ, Ukraine, 2007, № 2(18). - С. 101-111
- ▶ Saveliev A.V. Neurological aspects of cell neuromathematics // Artificial intelligence. - NAS of Ukraine, Donetsk, 2008, № 4, с. 612-623.
- ▶ Saveliev A.V. The neural network with the field calculations. Bionanocomposits aspects.//: Neuroinformatics 2009. - M.: МИФИ, 2009, Part. I. - С. 112-124.
- ▶ Saveliev A.V . From neural network modeling of the holding spike to a new concept of the neural substrate of long-term memory. Ufa state aviation technical University. Bashkir state medical University. <http://dspace.nbuu.gov.ua/bitstream/handle/123456789/8103/59-Savelev.pdf?sequence=1>
- ▶ Saveliev A.V. Modeling diffuse-synergetic aspects of bulk neurotransmitting: Neurocybernetics in neurobiology. См .: Materials XV International conference on Neurocybernetics 23 - 25 September 2009. Rostov-on-don.
- ▶ Sucharev V. The world is ruled by the laws of the cosmic resonances. - M.: 2012.
- ▶ Tirey M. The Breath Of The Universe. - M.: 2014. - 288 page.
- ▶ Torsion fields and information interaction- 2009. - 221 page.
- ▶ David Wilcock. The Science Of Unity. http://www.redov.ru/istorija/nauka_edinstva/index.php

- ▶ Kholmanskiy A.S. Adaptation of plants to abnormal physical factors. <http://www.smolensk.ru/user/sgma/MMORPH/N-23-html/holmanskiy/holmanskiy.htm>.
- ▶ Kholmanskiy A.S. The dependence of the brain functional asymmetry on the external environment // http://www.j-asymmetry.com/Kholmansky_1_09.htm.
- ▶ Kholmanskiy A.S . Biogenetic neutrinos // Consciousness and physical reality. 2004. № 4. pages 35 - 43.
- ▶ Kholmanskiy A.S . The galactic spiritual evolution factor // http://www.j-asymmetry.com/Kholmansky_1_09_2.htm.
- ▶ Kholmanskiy A.S . Nuclear-chemical catalysis // <http://www.sciteclibrary.ru/rus/catalog/pages/6303.html>.
- ▶ Kholmanskiy A.S. Teophysical neutrinos // Quantum magic, - 2007. -T.4. - V.2. <http://quantmagic.narod.ru/volumes/VOL422007/p2148.html>.
- ▶ Kholmanskiy A.S. The dichotomy between right and left in living systems // Asymmetry, - 2008. T. 2, № 3, s. 60-67. www.j-asymmetry.com/Asymmetry_03_2008.pdf .

Scientific center Bemkon www.bemkon.ru

- ▶ [/ holmansky-4.htm.](#)
- ▶ Kholmanskiy A.S. Modeling physics of the brain // Also. 2006, - T.5, - Vol.4.
<http://sgma.alpha-design.ru/MMORPH/N-12-html/holmansky-3/holmansky-3.htm>.
- ▶ Kholmanskiy A.S. The self-induction of the ether
<http://filosof.net/disput/holmansky/efir.htm>.
- ▶ Kholmanskiy A.S . The fractal resonance action principle // <http://ikar.udm.ru/mis-rt.htm>.
- ▶ Kholmanskiy A.S. Energoform // <http://www.sciteclibrary.ru/rus/catalog/pages/7441.html>.
- ▶ Kholmanskiy A.S. Chirality and quantum effects as factors of morphogenesis.
- ▶ Kholmanskiy A.S. Electromagnetic nature relativistic effects // <http://sgma.alpha-design.ru/MMORPH/N-19-html/kholmanskiy-2/kholmanskiy-2l.htm>;
- ▶ Sharburger V. Energy of the water. - M.: Eksmo, Yauza, 2007, pages 286-287.
- ▶ Shnol S.E. Cosmo physical factors in random processes. - Stockholm (Sweden): Svenska fysikarkivat, 2009. - 388 page
- ▶ Chejevskiy A.L. The cosmic pulse of life: The Earth in the arms of the Sun . Eliteracy. - M.: Thought, 1995. - 760 page

Scientific center Bemkon www.bemkon.ru

- ▶ Bellhouse B.J. The mechanics of fluid in a model of mitral valve and left ventricle, J. cardiovascular research 6, 1972, pages 199-210.
- ▶ Frolov Yu. P. The non-contact effect of substances containing benzene rings and heterocyclic on biological systems. Biophysics, 2001, vol. 46; 5: pages 946-950
- ▶ Kheradvar A., Milan, M., Garib, M . correlation between vortex ring and mitral ring dynamics during ventricular rapid filling, ASAIO Journal, January-February 2007 53 (1): pages 8-16.
- ▶ Kheradvar A., Garib, M. Influence of ventricular pressure drop on mitral annulus dynamics during vortex ring, Энн Biomed Eng. 2007 December;. 35 (12) :2050-64
- ▶ Lewin Roger, "A Downward Slope to Greater Diversity", Science, Cilt 217, 24 Eylul 1982, page 1239.
- ▶ Rifkin Jeremy, Entropy: A New World View, New York: Viking Press, 1980, page 6, 55.
- ▶ Rush J. H., The Dawn of Life, New York: Signet, 1962, page 35.
- ▶ Svensmark, H. Evidence of nearby supernovae affecting life on Earth. [Monthly Notices of the Royal Astronomical Society, Vol. 423, Issue 2](#), 24 APR 2012.
- ▶ Stavropoulos George P, The Frontiers and Limits of Science

ooo.bemkon@mail.ru

- ▶ WE ARE WAITING FOR A QUESTIONS . WE ARE READY TO EXPLAIN MORE DETAILED RECEIVED SCIENTIFIC RESULTS.
- ▶ EVEN EXPERT SYSTEMS FOR PEOPLE'S DIAGNOSTICS CAN BE CREAED. DIAGNOSTICS OBJECTIVE IS TO REVEAL PEOPLE WITH ABILITIES FOR AN ENERGY IN THE ETHER ABSORBATION.
- ▶ THANK YOU!

ooo.bemkon@mail.ru